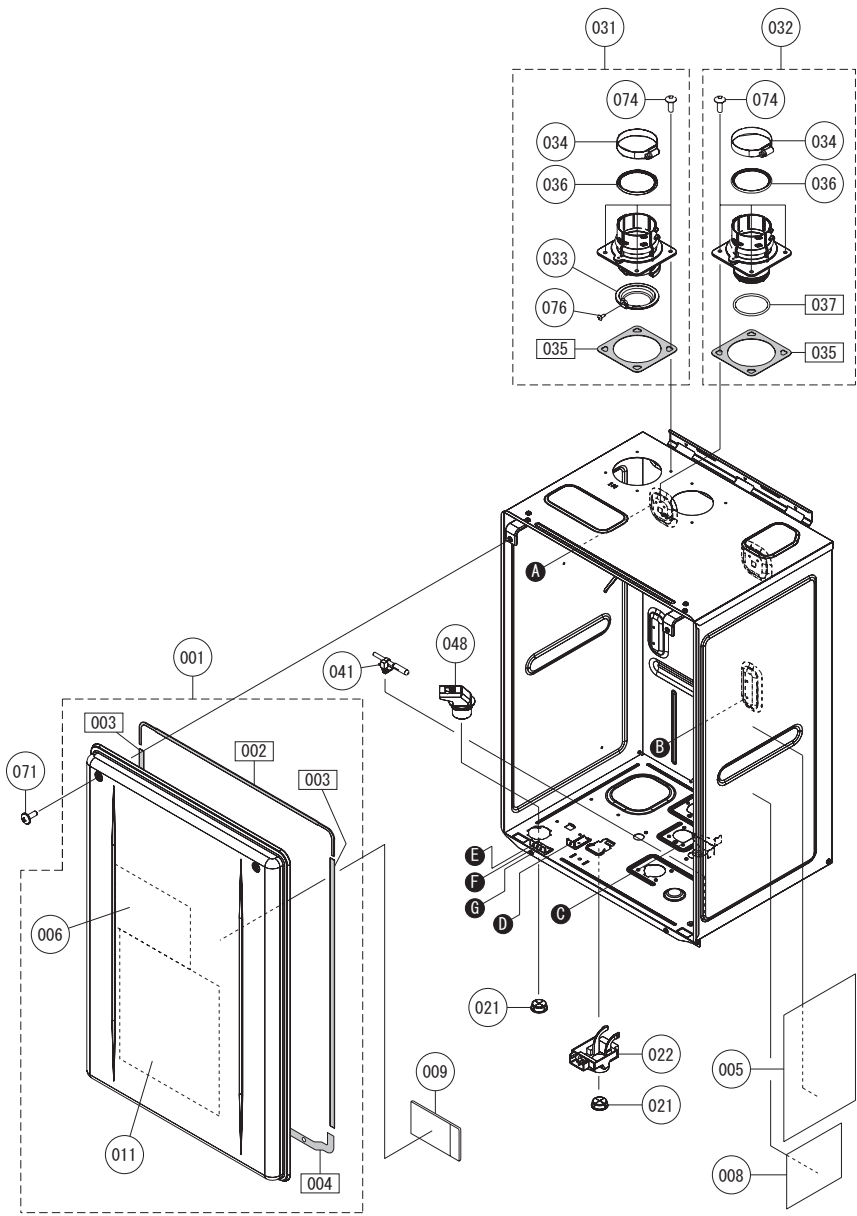


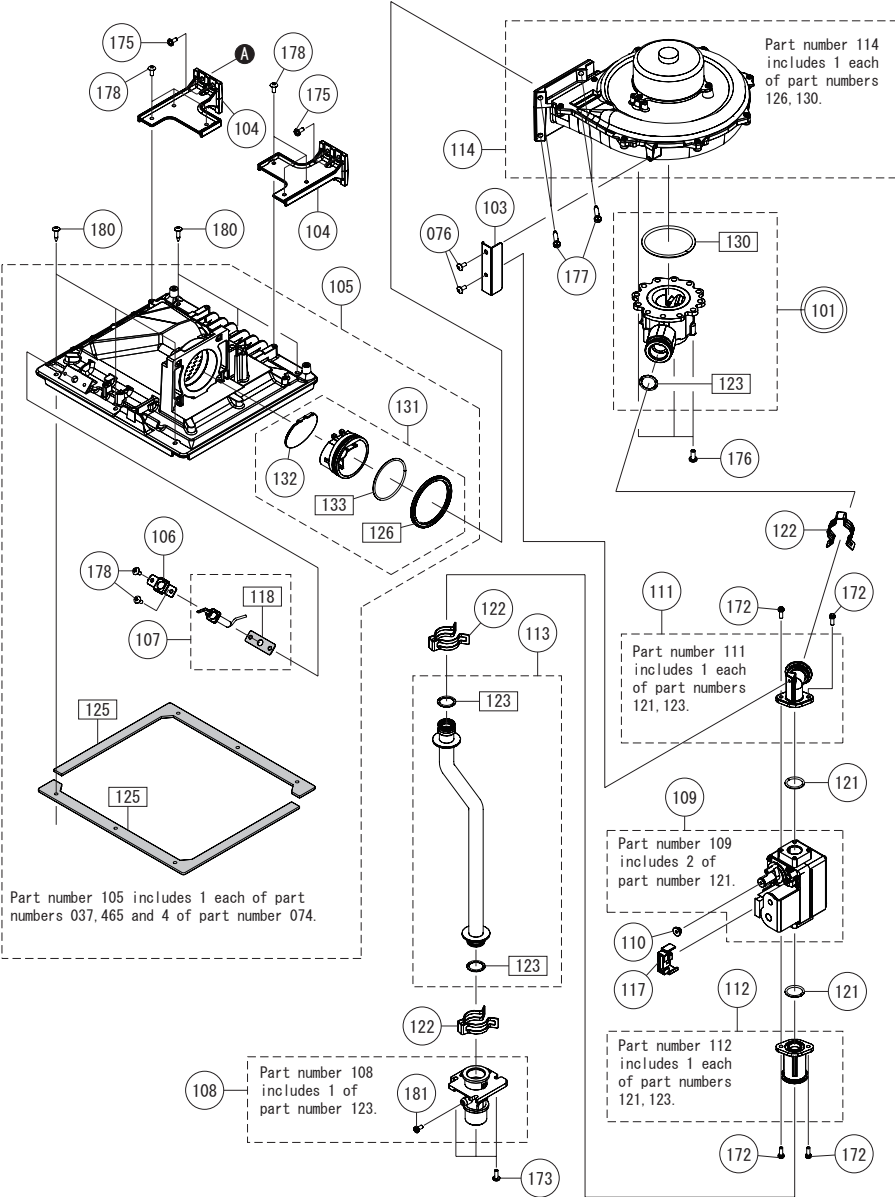
External outfitting NRCR111DV (GQ-C3260WXQ-FF US)
NRCR92DV (GQ-C2660WXQ-FF US)
PR199DV (GQ-C3260WXQ-FF PB US)



External outfitting NRCR111DV (GQ-C3260WXQ-FF US)
NRCR92DV (GQ-C2660WXQ-FF US)
PR199DV (GQ-C3260WXQ-FF PB US)

Part Nos	Part Names	Order Nos	Q'ty/unit
001	Front Cover - GQ-C3260WX-FF US	SKJ72NM	1<NRCR Series>
002	Front Cover - GQ-C3260WXQ-FF PB US	SKJ722S	1<PR Series>
003	Gasket - Front Cover Top	FABL011	2
004	Gasket - Front Cover Sides	CVAL004	1
005	Gasket - Front Cover Top and Bottom	APRL015	1
006	Label - Outside Front Cover Caution Label	ELVW003	1
007	Label - Inside Front Cover Caution Label	EYSK006	1
008	Label - Rating Plate DV/00	FDCX151	1
009	Parts List/Technical sheet	FDCX251	1
010	Wiring Diagram	FDRK002	1
021	Wire Grommet - Rubber	CXPA026	2
022	External Remote Terminal Block	EBTA017	1
031	Intake Flue w/ O-Ring and Gasket (SET)	SKJ71M1	1
032	Exhaust Flue w/ O-Ring and Gasket (SET)	SKJ71M2	1
033	Filter - Intake Air	FABF101	1
034	Clamp - Exhaust Pipe	FABF108	2
035	Gasket - Exhaust Flue	FABL101	2
036	O-Ring - Exhaust Pipe	FABL102	2
037	O-Ring - Exhaust Flue	FABL103	1
041	Thermistor - Air	EZWH101	1
071	Screw - Front Cover with washer MAX12 S410		
074	Screw - Pre-Coated Machined MAX12 S410		
075	Screw - Long Mounting Machine MAX12 S430		
076	Screw - Remote Terminal MAX10 S430		

Combustion unit and gas route NRCR111DV (GQ-C3260WXQ-FF US)
NRCR92DV (GQ-C2660WXQ-FF US)
PR199DV (GQ-C3260WXQ-FF PB US)



Combustion unit and gas route NRCR111DV (GQ-C3260WXQ-FF US)
NRCR92DV (GQ-C2660WXQ-FF US)
PR199DV (GQ-C3260WXQ-FF PB US)

Part Nos	Part Names	Order Nos	Q'ty/unit
101	Venturi 199kbuh - LP (SET)	SKJ72M2	1<LP>
	Venturi 199kbuh - NG (SET)	SKJ72M3	1<NG>
103	Mounting Plate - Gas Valve	FDA0101	1
104	Mounting Plate - Chamber	FAB0031	2
105	Burner Chamber (SET)	SKJ72M4	1
106	Mounting Plate - Flame Lifting Detection	FDA0314	1
107	Flame Lifting Detection w/ Gasket	SKJ72D0	1
108	Inlet Gas Connection w/ Screw (SET)	SKJ71UX	1
109	Gas Valve (SET)	SKJ71W8	1
110	Cover - Offset Adjustment	FAB0311	1
111	Gas Valve Outlet Connector (SET)	SKJ72MR	1
112	Gas Valve Inlet Connector (SET)	SKJ71VX	1
113	Gas Pipe (SET)	SKJ72M5	1
114	Fan Motor w/ Housing	SKJ72M6	1
117	Cover - Gas Valve Connector	FAB0332	1
118	Gasket - Flame Lifting Detection	FDA0200	1
121	O-Ring - P20	2192004	2
122	"C" Clamp -16B	6340407	3
123	O-Ring - P18	2110903	3
125	Gasket - Burner	FDA0202	2
126	Gasket - Chamber Inlet	FDA0004	1
130	O-Ring - Venturi - 60	FABL017	1
131	Non-return valve (SET)	SKJ72Y1	1
132	Non-return valve cap	FDA0042	1
133	O-ring - Non-return valve	FDA0005	1

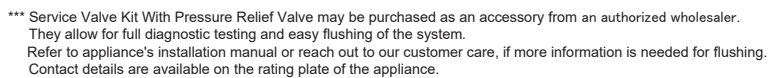
[illegible]

The diagram illustrates the electronic control unit. On the left, a tree-like structure shows the hierarchical connection of various components, with labels 481, 703, and 704 indicating specific connection points. A label 'WXQ FDC' is shown at the bottom left. On the right, a detailed view of the physical unit is shown, with labels 481, 700, 702, 703, 704, 731, 572, and 7 indicating specific components and connection points. A cable with a connector is shown at the bottom right.


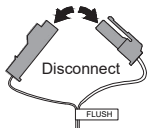
This procedure is only intended for use by a qualified service professional or authorized Service Representative. Any unauthorized use of this procedure may result in voiding the warranty. Reach out to our customer care for additional support. Contact details are available on the rating plate of the appliance.

** Connect the blue connector marked "FLUSH" for flushing near the Circuit Board when flushing the Heat Exchanger.

1. Close the gas supply valve.
2. Close the water inlet valve (V1) and the water outlet valve (V2).
3. Connect the one drain hose (H1) to the drain valve (V3), and then the other to the circulating pump.
4. Connect the drain hose (H2) to the circulating pump.
5. Connect the drain hose (H3) to the drain valve (V4).
6. Pour 1 gallon of "Calcium, Lime and Rust Removal Product" and 1 gallon water into the bucket. Recommend "Calcium, Lime and Rust Removal Product" for flushing.
7. Place the both drain hoses (H2 and H3) into the bucket filled with the flushing solution.
8. Open the both drain valves (V3 and V4).



4. Close the drain valve (V4) and then remove the drain hose (H3) from the drain valve (V4).
5. Remove the drain hose (H1) from the drain valve (V3).
6. Disconnect the blue connector marked "FLUSH" for flushing.
The code "C00" goes out on the Remote Controller.
7. Close the Front Cover.
8. Open the gas supply valve and water outlet valve (V2).
9. Check for correct operation of the water heater.

A diagram showing a blue connector with a black cap being pulled away from a grey valve assembly. The word "Disconnect" is written below the connector.

<Special part>	
Special part	Special part no.
Owner's guide	888
Installation manual	889

※ To request a French version of the Owner's guide or Installation manual, Reach out to our customer care. Contact details are available on the rating plate of the appliance.

part	part no.
Installation manual	964

981

981	982	983	984	985	986	987	988	989	990	991	992	993	994	995	996	997	998	999	1000
074	075	175	176	177	178	179	180	486	490	571	572	989	990						
10	5	10	5	5	5	3	5	5	5	5	10	3	3						

Diagram illustrating the multiplication of 982 by 6 using the distributive property:

$$982 \times 6 = (123 + 452 + 454 + 457 + 987 + 988) \times 6$$

The diagram shows the number 982 in a circle on the left, connected by a line to a dashed box on the right. Inside the dashed box, there are six circles containing the numbers 123, 452, 454, 457, 987, and 988. Below each circle is a small circle representing a digit, with a line connecting it to the number above. The small circles are labeled with the following multipliers: 3, 5, 3, 3, 3, and 3 respectively.

Refer to appliance's installation manual or reach out to our customer care, if more information is needed for flushing. Contact details are available on the rating plate of the appliance.